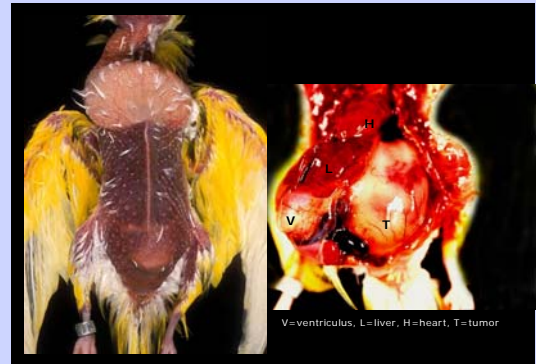


A Unique Case of Malignant Seminoma in a Budgerigar

Erin Arnold, NC State University College of Veterinary Medicine, Raleigh, NC
Dr. Jim Cooley DVM, RADDL, Raleigh, NC
Dr. John Barnes DVM, NC State University College of Veterinary Medicine, Raleigh, NC

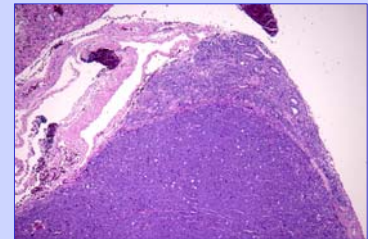
CASE HISTORY

- A nine year old male budgerigar was presented for necropsy after dying unexpectedly and without previous symptoms according to the owners.
- The abdomen was significantly distended due to a large intraabdominal mass

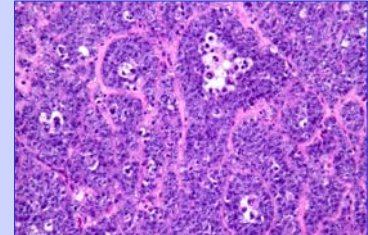


SEMINOMA: DIAGNOSING A TESTICULAR TUMOR

- Seminomas are tumors resulting from primordial germ cells arising from the seminiferous tubules of the testes.
- The tumor cells are arranged in lobule like structures separated by fibrovascular septa.
- Some tubular structures are seen as multiple layers of cells surrounding a central cavity.
- Cells of the tumor are densely packed and appear to have large and irregular nuclei with a thin rim of basophilic cytoplasm.



Tumor crowned by epididymis.



Neoplastic cells reminiscent of seminiferous tubules.

DISCUSSION

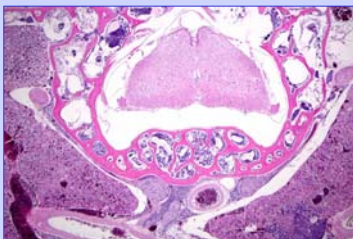


Figure 1

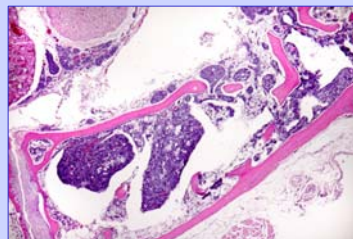


Figure 2

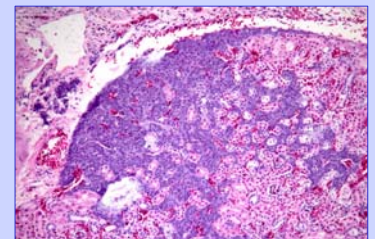


Figure 3

- Extensive metastasis has occurred within the medullary spaces of the vertebral column. (Fig. 1&2)
- Tumor invasion of the kidney is seen as small aggregates within the renal interstitium and collections of neoplastic cells surrounding the ureters. (Fig.3)
- This case is unique because metastasis of seminomas is not common and has only been reported to occur in the liver.