

Liposarcoma in an African Goose (*Anser cygnoides*)

Melissa Tucker,¹ Lauren Powers DVM,² John Barnes DVM, PhD¹

¹ Department of Population Health and Pathobiology

North Carolina State University College of Veterinary Medicine, Raleigh, NC 27695

² Carolina Veterinary Specialists Medical Center, Huntersville, NC 28078

Case History

- Young male African Goose
- 3 cm pendulous mass on horn
- 1 cm mass on sphincter of the vent
- Lesions surgically removed
- Tumors developed along surgical incision and margins within one month after removal
- Rapid growth of tumors continued and new growths developed (Figure 1 a,b)
- Bird was euthanized four months after initial surgical removal



Figure 1a: African Goose 4 months post surgical tumor removal. Note lesions along upper eyelid.



Figure 1b: African Goose 4 months post surgical tumor removal.

Results

- Histopathologic findings confirmed a diagnosis of liposarcoma
- Acid-fast staining and virus isolation were negative
- Hematoxylin and eosin stains and oil red O method were used
- Compared to normal (Fig 2), the tumor was composed of extensive lobular masses located primarily in the dermis (Fig 3)
- Overlying epidermis contained areas of ulceration (Fig 3)
- Ulcers had marked secondary superficial bacteria and fungal yeast colonization
- Round to oval cells showing a pale staining, lacy cytoplasm and often containing smooth walled vacuoles and visible nucleoli (Fig 4,5)
- Nuclei were round to oval and primarily centrally located (Fig 4,5)
- Binucleate cells and mitotic figures were rare
- Areas of hemorrhage often associated with areas of ulceration (Fig 6)
- Many lobules had necrotic central areas filled with a proteinaceous fluid (Fig 7)
- Cholesterol clefts in dense areas of the proteinaceous fluid (Fig 7)
- Oil red O sample was strongly positive for lipids (Fig 8)

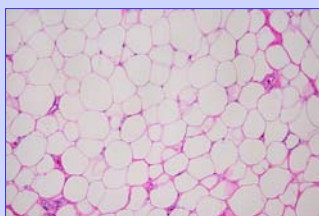


Figure 2:

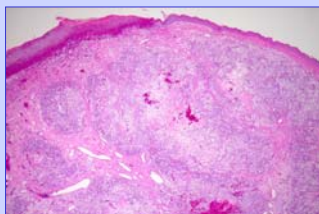


Figure 3:

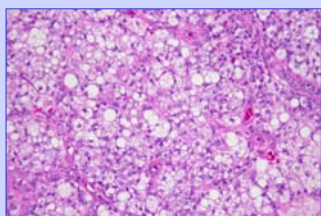


Figure 4:

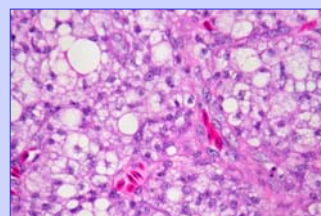


Figure 5:

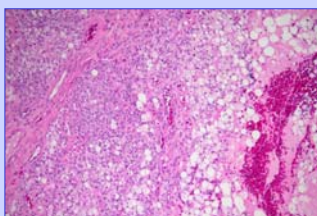


Figure 6:

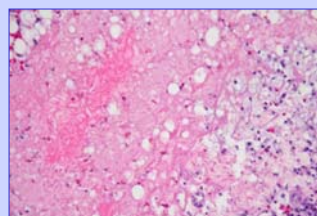


Figure 7:

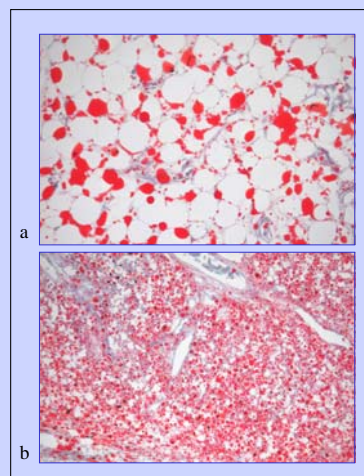


Figure 8: